

TPLUS 24



3 - 4 - 5 m

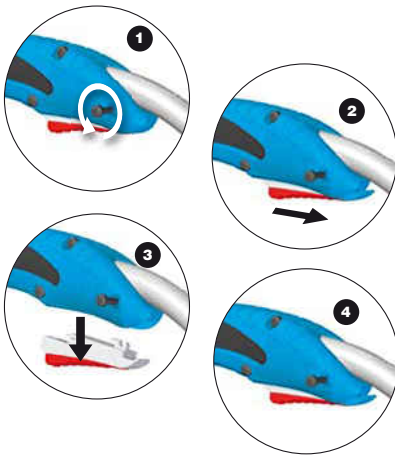
1.2 Kg
1 mV
peak

113

mm

0.8 - 0.9
1.0 - 1.2X
60%250A CO₂
220A Mix

CODE	↔	EURO
MA3123	3 m	EURO
MA3124	4 m	EURO
MA3125	5 m	EURO



- IT** Sostituzione rapida del pulsante
- EN** Quick Trigger Replacement
- DE** Schnellwechselsystem für den Schalter
- FR** Remplacement rapide de la gâchette
- ES** Sustitucion rápida del pulsador
- TR** Kolay ve çabuk tetik değişimi.
- RU** Быстрая замена курка

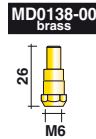
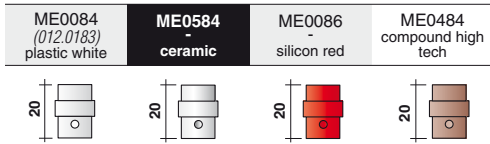


EURO



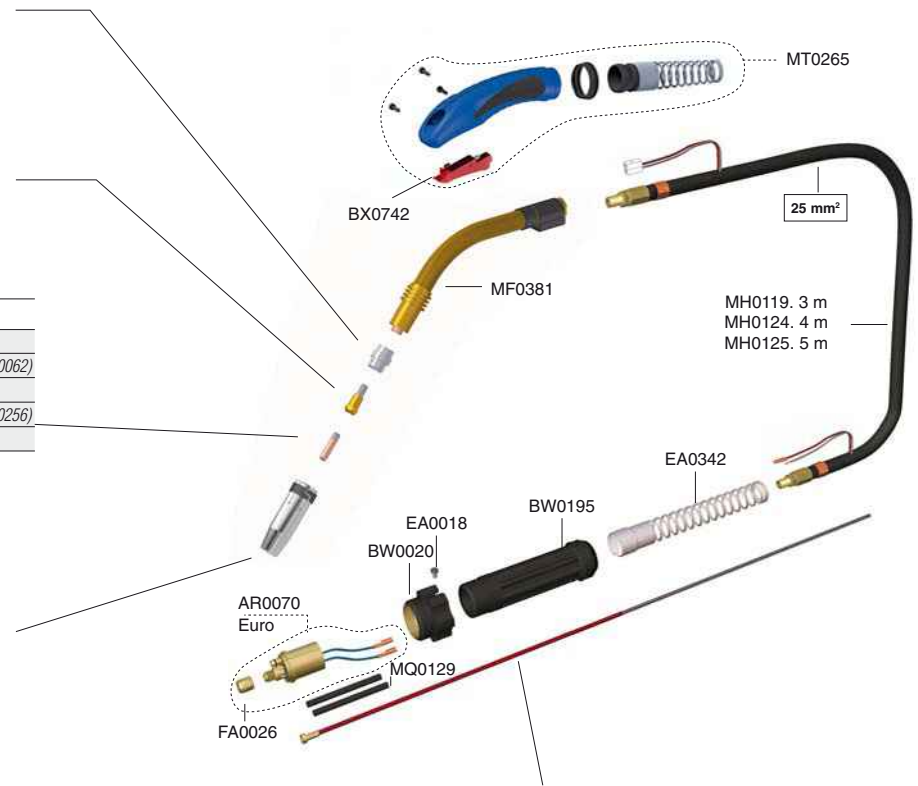
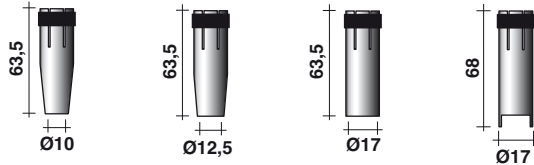
EN 60974-7





Ø mm	Ø in	Cu	Cu-Ni	Cu for Al	CuCrZr
0,6	.023	MD0008-06 (140.0008)	MD0008-36		
0,8	.030	MD0008-08 (140.0059)	MD0008-38	MD0008-58 (141.0002)	MD0008-78 (140.0062)
0,9	.035	MD0008-09 (140.0177)			
1,0	.040	MD0008-10 (140.0253)	MD0008-40	MD0008-60 (141.0007)	MD0008-80 (140.0256)
1,2	.045	MD0008-12 (140.0387)	MD0008-42	MD0008-62	MD0008-82

MC0302 (145.0128)	MC0301 (145.0030)	MC0300 (145.0047)	MC0303
-------------------	--------------------------	-------------------	--------



STANDARD (REF.)

Wire	red color	
		Steel
1,0 + 1,2 .040" ± .045"	3 m / 10'	GM0510 (124.0026)
	4 m / 12'	GM0511 (124.0031)
	5 m / 16,4'	GM0512 (124.0035)